

**BSH**  
**50**  
**YEARS**



**Classic Stage Company**

JOHN DOYLE, Artistic Director

presents

# CARMEN JONES

BY **OSCAR HAMMERSTEIN II**

BASED ON MEILHAC AND HALÉVY'S ADAPTATION OF  
PROSPER MÉRIMÉE'S "CARMEN"

MUSIC BY **GEORGES BIZET**

with

DAVID ARON DAMANE, ERICA DORFLER, CLIFTON DUNCAN,  
ANDREA JONES-SOJOLA, JUSTIN KEYES, LINDSAY ROBERTS,  
ANIKA NONI ROSE, SOARA-JOYE ROSS, LAWRENCE E. STREET, TRAMELL TILLMAN

Set Design  
**SCOTT PASK**

Costume Design  
**ANN HOULD-WARD**

Lighting Design  
**ADAM HONORÉ**

Sound Design  
**DAN MOSES SCHREIER**

Hair and Wig Design  
**MIA NEAL**

Music Supervisor/Orchestrator  
**JOSEPH JOUBERT**

Music Director  
**SHELTON BECTON**

Casting  
**TELSEY + COMPANY**  
**REBECCA SCHOLL, CSA**

Press Representative  
**THE PUBLICITY OFFICE**

Production Stage Manager  
**BERNITA ROBINSON**

Chief Operating Officer/GM  
**TONI MARIE DAVIS**

CHOREOGRAPHED BY **BILL T. JONES**

DIRECTED BY **JOHN DOYLE**

*CARMEN JONES* is presented through special arrangement with R & H Theatricals: [www.rnh.com](http://www.rnh.com).

This project is supported in part by an award from the National Endowments for the Arts.

# Cast

---

*in alphabetical order*

Husky Miller.....	DAVID ARON DAMANE
Myrt.....	ERICA DORFLER
Joe.....	CLIFTON DUNCAN
Sally.....	ANDREA JONES-SOJOLA
Rum.....	JUSTIN KEYES
Cindy Lou.....	LINDSAY ROBERTS
Carmen Jones.....	ANIKA NONI ROSE
Frankie.....	SOARA-JOYE ROSS
Dink.....	LAWRENCE E. STREET
Sergeant Brown.....	TRAMELL TILLMAN

All other roles played by members of the company.

Assistant Stage Manager.....	ANGELA PEREZ
Dance Captain.....	ERICA DORFLER

## ORCHESTRA

Music Supervisor/Orchestrator: Joseph Joubert

Music Director: Shelton Becton

Piano - Shelton Becton;

Violin - Tomoko Akaboshi; Cello - Aaron Stokes; Bass - Levi Jones;

French Horn - Kyra Sims; Woodwinds - Chris Reza

Music Coordinator: Michael Aarons

Music Preparation: Isaac Alter

*All performers in this production are members of Actors' Equity Association, the Union of Professional Actors and Stage Managers in the United States.*

*The use of any recording device, either audio or video, and the taking of photographs, either with or without flash, is strictly prohibited. Please turn off all electronic devices such as cellular phones, beepers, and watches. The use of cell phones in the theater is prohibited by New York City law.*

# Who's Who

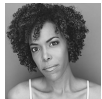


## DAVID ARON DAMANE

(Husky Miller). CSC debut.

Broadway: *The Book Of Mormon*, *Don't Dress For Dinner*, *Big*

*River*, *Riverdance*, *The Life*. Tours: *The Book Of Mormon*, *The Color Purple*, *Big River*, *Riverdance*, *Tommy*. Off-Broadway: *Dinah Was, Living In The Wind*. Selected Regional: *Porgy & Bess* (New York City Opera), *Macbeth* (Stratford Theatre Festival), *A Christmas Carol* (Madison Square Garden), *Titus Andronicus*, *To Kill A Mockingbird* (Ford's Theatre). Television: "Chicago Fire," "Chicago PD," "Instinct," "Law & Order: SVU," "Law & Order," others. [www.davidarondamane.com](http://www.davidarondamane.com)



## ERICA DORFLER (Myrt)

CSC debut. Broadway: *Natasha*, *Pierre and the Great Comet of 1812*; *The Book of Mormon*;

*Memphis*; *Baby It's You!*; *Scandalous*. Off-Broadway: *Avenue Q*, *Forbidden Broadway*, *Silk Stockings* (York Theatre.) Regional/NYC: *The Way of the World* (Folger Theatre, dir. Theresa Rebeck,) *THIS* (Barrington Stage,) *Here's Hoover* (Abrons Arts, dir. Alex Timbers,) *West Side Story* with the L.A. Philharmonic (Hollywood Bowl,) *Natasha*, *Pierre and the Great Comet of 1812* (ART). Television: "The Family." [www.ericadorfler.com](http://www.ericadorfler.com)



## CLIFTON DUNCAN (Joe)

CSC debut. Broadway: *The Play that Goes Wrong*. Off-Broadway highlights include Yang Sun

in *The Good Person of Szechwan* (Public Theatre/La Mama), James Coburn in *Kung-Fu* (Signature Theatre), *The Balladeer in Assassins* (City Center Encores!). Regional highlights include New York Stage & Film, Yale Repertory Theatre, The Shakespeare Theatre Company, Arena Stage, The Old Globe, and Williamstown. Television: "Flesh and Bone." Training: New York University Graduate Acting Program.

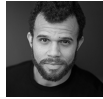


## ANDREA JONES-SOJOLA (Sally)

born in Kentucky. CSC debut. Broadway: *Porgy and Bess*. NYC: *Brigadoon*, *Cabin in the Sky*,

*Annie Get Your Gun*, *Most Happy Fella* (New York City Center), *Candide* (Carnegie Hall), *Parade*, *Sweeney Todd* (Lincoln Center), *Newton's Cradle* (Outstanding Performance in a Leading Role, New York Musical Festival). Film: *For Colored Girls*. TV: "The Blacklist," "Mozart in the Jungle," "The Sound of Music

Live!" Training: AD, University of Cincinnati College-Conservatory of Music; MM, University of Kentucky.



## JUSTIN KEYES (Rum)

CSC debut. Broadway: *How To Succeed In Business Without*

*Really Trying*, *The Apple Tree*, *Mary Poppins*. Off-Broadway: *Jerry Springer: The Opera*. Tour: *The 25th Annual Putnam County Spelling Bee*. Television: "Get Christie Love," "Power," "I Love You, But I Lied," "Gossip Girl." Training: BFA, University of Michigan. [www.justinarthurkeyes.com](http://www.justinarthurkeyes.com)



## LINDSAY ROBERTS

(Cindy Lou). CSC debut. Broadway/National Tours: Clara u/s in *The Gershwin's Porgy and Bess*, Felicia

u/s in *Memphis*, Creole Love Call in *After Midnight* (NCL). Off-Broadway: *Hey, Look Me Over!*; *Brigadoon*; *New Yorkers*; *Gentlemen Prefer Blondes*; *Lost in the Stars* (Encores!); *Radio City Christmas Spectacular*. Regional: Sarah in *Ragtime* (Ogunquit Playhouse), Queenie in *Showboat* (IRNE Award nom., Best Featured Actress in a Musical). Training: MS, Drexel University; BM, University of Maryland. [www.lindsayroberts.com](http://www.lindsayroberts.com)



## ANIKA NONI ROSE

(Carmen Jones).

Broadway: *Caroline, or Change* (Tony, Theatre World and Lucille

Lortel Award winner, Clarence Derwent Award, Drama Desk nominations); *A Raisin in the Sun* (Tony Award, Outer Critics Circle nominations); *Cat On A Hot Tin Roof*. Additional stage: *Footloose*, *Eli's Coming* (Obie Award). TV: "The Quad," "Roots" (NAACP Image Award nomination), "Power," "The Good Wife," "The No. 1 Detective Agency." Film: *Assassination Nation*; *Everything, Everything*; *For Colored Girls*; *Dreamgirls* (NAACP Image Award nomination). Anika is the youngest inductee honored as a Disney Legend for her role in *Princess and the Frog*. Thank you to Eugene Gwozdz & Vocal coach Eddie Sayegh.



## SOARA-JOYE ROSS (Frankie)

was born in New York. CSC debut.

Broadway: *Les Misérables*, *Dance of the Vampires*. National Tours: *The Gershwin's Porgy and Bess*, *Smokey Joe's Café*. Off-Broadway: *Disenchanted* (Westside), *Dessa Rose* (Lincoln Center),

# Who's Who

*Single Black Female* (Playwrights Horizons & The Duke, dir. Colman Domingo). *Jerry Springer the Opera* (Carnegie Hall). *The First Noel* (The Apollo). *Cross That River* (Outstanding Individual Performance – NYMF Award). Film: *Garden State*. TV: "Crashing" (HBO). Training: The American Musical and Dramatic Academy. [www.soara-joye.com](http://www.soara-joye.com)



**LAWRENCE E. STREET** (Dink). CSC debut. Broadway: *Urinetown* (dir. John Rando). National Tours:

*Flashdance* (dir. Sergio Trujillo), *The Radio City Christmas Spectacular*. Off-Broadway: *Archbishop Supreme Tartuffe Cleante* (Classical Theatre of Harlem). Regional: Booker T. Washington in *Ragtime* (Barrington Stage Company), Harry in *Company* (Barrington Stage Company), *Satchmo at the Waldorf* (Seacoast Repertory). Other/U.K.: Mingo in *Porgy and Bess* (Royal Festival Hall) Training: M.Mus, The University of Akron; BFA, Carnegie Mellon University.



**TRAMELL TILLMAN** (Sgt. Brown). CSC debut. Off-Broadway: *Tis Pity...* (Red Bull Theatre, dir. Jesse Berger). Regional: *All the Roads*

*Home* (Cincinnati Playhouse, dir. Lee Sunday Evans), *Hamlet* (Oregon Shakes, dir. Lisa Peterson), *Sweat* (OSF/Arena Stage, dir. Kate Whoriskey), *The Wiz* (OSF, dir. Robert O'Hara), *The Tempest* (Chautauqua Theatre, dir. Jade King Carroll), *A Raisin in the Sun* (Clarence Brown Theatre, dir. Woodie King Jr.). Television: "Dietland," "Difficult People." Training: MFA, University of Tennessee Knoxville.

**JOHN DOYLE** (Director). CSC: *Passion, Allegro, Peer Gynt, Dead Poets Society, Pacific Overtures, As You Like It, Fire and Air*. Broadway: *Sweeney Todd* (Tony and Drama Desk Awards for Best Director of a Musical), *Company* (Tony Award for Best Musical Revival), *A Catered Affair* (Drama League Award for Best Musical Production), *The Visit* (Tony nom. for Best Musical), *The Color Purple* (Tony Award for Best Musical Revival, Drama Desk Award for Best Director of a Musical). Off-Broadway: *Wings* (Second Stage Theatre); *Road Show* (Public Theater); *Where's Charley?*, *Irma La Douce* (Encores!). Regional: *Kiss Me, Kate* (Stratford Festival); *The Caucasian Chalk Circle* (ACT); *Merrily We Roll Along, The Three Sisters* (Cincinnati

Playhouse in the Park); *Ten Cents a Dance* (Williamstown); *The Exorcist* (L.A.). In the U.K., John Doyle has been artistic director of four regional theaters. U.K. includes: *The Gondoliers, Mack and Mabel* (West End); *A Midsummer Night's Dream* (Regent's Park); *Oklahoma!* (Chichester); *Amadeus* (Wilton's Musical Hall). Opera includes: *Madama Butterfly* (Grange Park), *Lucia di Lammermoor* (Houston/La Fenice/Sydney Opera House), *Pefer Grimes* (Metropolitan Opera), *The Rise and Fall of the City of Mahogany* (LA Opera). Film: "Main Street." John Doyle is Artistic Director of CSC.

**BILL T. JONES** (Choreographer). has received the Human Rights Campaign's 2016 Visibility Award, 2013 National Medal of Arts, 1994 MacArthur "Genius" Award, 2010 Kennedy Center Honors, and 2014 Doris Duke Performing Artist Award. He was recognized as Officier de l'Ordre des Arts et des Lettres by the French government in 2010, inducted into the American Academy of Arts & Sciences in 2009, and named "An Irreplaceable Dance Treasure" by the Dance Heritage Coalition in 2000. Theatre work includes *Fela!*, which he co-conceived, co-wrote, directed, and choreographed (2010 Tony for Best Choreography); *Spring Awakening* (2007 Tony for Best Choreography, 2006 Obie Award); and SEVEN (2006 Lucille Lortel Award). In 1982 he and his late partner Arnie Zane formed the Bill T. Jones/Arnie Zane Company. He is Founding Artistic Director of New York Live Arts, which supports the nation's dance and movement-based artists through new approaches to producing, presenting and educating. [www.newyorklivearts.org](http://www.newyorklivearts.org).

**JOSEPH JOUBERT** (Orchestrations and Music Supervisor). Broadway: *Disaster; The Color Purple* (Drama Desk nom., dir. John Doyle); *Violet; Leap of Faith; Caroline, or Change; The Color Purple* (2005). Musical Director: *Motown The Musical*. Assistant Conductor: *Nice Work If You Can Get It; Billy Elliot*. Off-Broadway: *Violet* (Drama Desk nom.) TV: "Smash." Film: *Nights in Rodanthe*. Recording: Broadway Inspirational Voices, Patti Labelle, Ashford & Simpson, Diana Ross, Norm Lewis. Grammy and Emmy Award nominee.

**SCOTT PASK** (Scenic Design). With John Doyle: *Dead Poets Society* (CSC),

# Who's Who

---

*The Visit* (Drama Desk nom.), *Merrily We Roll Along*, *The Three Sisters* (Cincinnati Playhouse), *Ten Cents a Dance* (WTF), *The Exorcist* (Geffen), *Peter Grimes* (Met Opera). Selected credits: *The Band's Visit* (Tony nom.); *Mean Girls* (Tony nom.); *The Book of Mormon* (Tony Award); *Waitress*; *Oh, Hello!*; *Something Rotten!* (OC nom.); *Blackbird*; *The Pillowman* (Tony Award); *The Coast of Utopia* (Tony, Drama Desk, Outer Critics Circle and Hewes Awards); *An Act of God*; *It's Only a Play*; *Finding Neverland*; *Pippin* (Tony nom.); *I'll Eat You Last*; *Hair*; *Pal Joey* (Tony nom.); *Les Liaisons Dangereuses* (Tony nom., DD Award); *Nine*; *The Lieutenant of Inishmore*; *Speed-the-Plow*; *Take Me Out*; *Urinetown*; *Cirque du Soleil's Amaluna*.

**ANN HOULD-WARD** (Costume Design). CSC: *Passion*, *Allegro*, *Peer Gynt*, *Dead Poets Society*, *Pacific Overtures*, *As You Like It*, *Fire and Air*. Select Broadway: *The Color Purple*, *The Visit*, *The People in the Picture*, *A Free Man of Color* (Drama Desk nom.), *A Catered Affair* (Drama Desk nom.), *Beauty and the Beast* (Tony Award), *Into the Woods* (Tony and Drama Desk noms), *Falsettos*, *Sunday in the Park With George* (Tony and Drama Desk noms), *Saint Joan*, *Little Me*. Other Off-Broadway: *Notes from the Field*, *The Blue Flower*, *Russian Transport*, *Road Show*, *Lobster Alice*, *Cymbeline*. Ms. Hould-Ward's work can be seen in over 35 international companies of *Beauty and the Beast*, and her other designs are featured in shows all over the world. More than 100 regional theater credits. Recipient of the Fashion Institute of Technology's Patricia Zipprodt Award.

**ADAM HONORÉ** (Lighting Design). is a New York based lighting designer for plays, musicals, dance, and concerts. Off-Broadway: *Raisin* (APAC), *Red Scare on Sunset* (TFNC). Regional: *Skeleton Crew* (Huntington Theatre Company), *Mamma Mia!* (Engeman Theatre). International: *The Seasons* (Austria), *Kinky Boots* (Manila), *Fun Home* (Asia, featuring Lea Salonga). Recent Associate/Assistant Credits: *Fire and Air* (CSC), *Matilda* (Asia), *Love Never Dies* (1st National Tour). [www.HonoreLighting.com](http://www.HonoreLighting.com)

**DAN MOSES SHREIER** (Sound Design). Broadway: *The Iceman Cometh*, *Falsettos*, *American Psycho*, *The Visit*, *Gentleman's Guide to Love and Murder*, *Sondheim on Sondheim*, *A Little Night Music*, *Gypsy* (Patti

LuPone), *Radio Golf*, John Doyle's production of *Sweeney Todd*, *Gem of the Ocean*, *Pacific Overtures*, *Assassins*, *Into the Woods*, *Topdog/Underdog*, *Dirty Blonde*, *Noise/Funk*. Scores composed for Broadway: *The Merchant of Venice* (Al Pacino), *Julius Caesar* (Denzel Washington), *The Tempest* (Patrick Stewart). Awards: five Tony Award noms., four Drama Desk Awards. The La Jolla Playhouse has commissioned Dan to compose a musical with Brian Selznick (*The Invention of Hugo Cabret*) based on Brian's book, *The Houdini Box*.

**MIA NEAL** (Hair & Wig Design). Broadway credits include *The Iceman Cometh* (2018), *Shuffle Along...* (2016, winner of Drama Desk Award for Outstanding Hair and Wig Design), *A Raisin in the Sun* (2014). Numerous film and television credits. Education: Juilliard School professional internship program for wigs and makeup.

**ERIC REYNOLDS** (Properties Supervisor). CSC debut. Broadway: *King Kong*; *The Band's Visit*; *Sunset Boulevard*; *Miss Saigon*; *Come From Away*; *Oh, Hello* (now on Netflix); *Fully Committed*. Off-Broadway: *Jerry Springer the Opera* (New Group), *The Metromaniacs* (Red Bull), *A Letter to Harvey Milk* (Theatre Row-Acorn), *The Golden Apple* (Encores!), *Servant of Two Masters*, *Pericles* (TFANA), *Terms of Endearment* (Directors Co), *Himself and Nora* (Minetta Lane), *Roadshow* (Public Theater, dir. John Doyle).

**SHELTON BECTON** (Music Director). Theatre credits include Music Director of *The Wiz*, *Ain't Misbehavin'*, *The Color Purple*, *Baby It's You*, *Memphis*, *Lady Day at Emerson's Bar & Grill*, and *Shuffle Along*. Featured Compositions include the Macy's Thanksgiving Parade with Phylicia Rashad, "The Cosby Show," "The Tonight Show," "Denyce Graves ('Angels Watching Over Me' CD)," "Brooklyn Tabernacle Choir ('No One Like Jesus')." Music Director/Vocalist for artists such as Celine Dion, Vanessa Williams, Judy Collins, Patti Austin, Roz Ryan, and Roberta Flack.

**BERNITA ROBINSON** (Production Stage Manager). is very happy to be at CSC and a part of this wonderful production. Broadway credits include *Ragtime* (original), *Thurgood*, *Man of La Mancha* (revival), *A Moon for the Misbegotten*, and *Aida* among others.

# Who's Who

---

Regional theatre credits include Alabama Shakespeare, Pioneer Theater, Kansas City Rep and Casa Manana. Productions include *Ring of Fire*, *A Few Good Men*, *Evita*, and the world premiere of *Roof of the World*. Off-Broadway productions at Signature, Playwrights Horizons, The York, among others.

**ANGELA PEREZ** (Assistant Stage Manager). Off-Broadway: *Nothing To Hide* (Pershing Square Signature Theatre, dir. Neil Patrick Harris), Cherry Lane Mentor Project, *Gigantic The Musical!* (Vineyard Theatre), *Love & Information* (NYTW), *Drop Dead Perfect* (Theatre at St. Clements), *Hereafter Musical* (Theater Center), *Atomic! The Musical* (Acorn Theatre), *The Death of The Moon* (Jerry Orbach Theater). Regional: Penguin Rep & Shadowland Theatre. Workshops of *Redrum*, *The Musical Parody of The Shining*. Training: BA, SUNY New Paltz.

**OSCAR HAMMERSTEIN II** (1895-1960): Born into a theatrical dynasty headed by his grandfather and namesake, Oscar Hammerstein II began his stage career as a playwright, soon turning to librettos and lyrics written for some of the greatest composers of his day. His innovations breathed new life into the art form of operetta with such classics as *Rose-Marie*, *The Desert Song* and *The New Moon*. He wrote eight musicals with Jerome Kern, including *Music in the Air*, *Sweet Adeline* and their masterpiece, *Show Boat*. His last musical before embarking on an exclusive partnership with Richard Rodgers was *Carmen Jones*, his retelling of Bizet's tragic opera for an all-black cast. It was produced the season after *Oklahoma!* In 1943, Hammerstein joined forces with Richard Rodgers. Their first collaboration merged Hammerstein's advance in operetta with Rodgers' achievements in musical comedy and the result, *Oklahoma!*, was not only the first of a new genre—the musical play—but also the start of the most successful partnership in the American musical theatre. Over the next 17 years, Rodgers and Hammerstein wrote eight more Broadway musicals—*Carousel*, *Allegro*, *South Pacific*, *The King and I*, *Me and Juliet*, *Pipe Dream*, *Flower Drum Song*, and *The Sound of Music*; one movie musical, *State Fair*; and one for TV, *Cinderella*. In 1952 he published LYRICS,

a collection of his own lyrics with a classic introduction "Notes on Lyrics."

## **CLASSIC STAGE COMPANY (CSC).**

CSC, is committed to re-imagining classic stories for contemporary audiences. The company has been a home for New York's finest established and emerging artists to grapple with the great works of the world's repertory that speak directly to the issues of today. CSC serves an average of 35,000 audience members annually, including more than 4,000 students through its nationally recognized education programs. Productions have been cited repeatedly by all the major Off-Broadway theater awards including the Obie, Drama Desk, Outer Critics Circle, Drama League, and the Lucille Lortel Award for Outstanding Body of Work.

## **TELSEY + COMPANY**(Casting).

Broadway/Tours: *Pretty Woman*, *Straight White Men*, *My Fair Lady*, *Carousel*, *Mean Girls*, *Frozen*, *Escape to Margaritaville*, *SpongeBob SquarePants*, *Once on This Island*, *Anastasia*, *Hello, Dolly!*, *Come From Away*, *Waitress*, *Hamilton*, *Kinky Boots*, *Wicked*, *The Color Purple*, *On Your Feet!*, *The King and I*, *An American in Paris*. Off-Broadway: *Sweeney Todd*, Atlantic, MCC, Park Avenue Armory, St. Ann's Warehouse, Second Stage. Regional: Center Theatre Group, La Jolla Playhouse, New York Stage and Film, Paper Mill Playhouse, Pasadena Playhouse, Wallis Annenberg Center, Williamstown Theatre Festival. Film: *Mary Poppins Returns*, *The Greatest Showman*, *Miss Sloane*, *Into the Woods*, *Margin Call*, *Rachel Getting Married*. TV: "Jesus Christ Superstar Live in Concert," "This Is Us," "House of Cards," "Divorce," "NCIS: New Orleans," "Rise," "One Day at a Time," "Atypical," commercials.  
[www.telseyandco.com](http://www.telseyandco.com)

# CSC Board of Directors

---

Lynn F. Angelson, **Chair**  
Therese Steiner, **Vice Chair**  
Donald Francis Donovan, **Chair Emeritus**

## EXECUTIVE COMMITTEE

Paul Blackman	Justin Blake	Raymond DiPrinzio	Barbara Marks
Marc Abrams	Matthew Harrington		Gail F. Stone
Daniel M. Abuhoff	Debra Mayer		Matthew Tague
D. Rebecca Davies	Edwin S. Maynard		Emma Taylor
Denise Dickens	Maeve O'Connor		Thomas A. Teeple
Jacquelyn Grimm	Nicola Christine Port		Roslyn Tom

# CSC Donors

---

## DIRECTORS' CIRCLE (\$50,000 and above)

Lynn & Mark Angelson  
The Angelson Family Foundation  
The Bouncer Foundation  
Howard Gilman Foundation  
Barbara H. & Alan D. Marks  
The Shubert Foundation  
The Harold and Mimi Steinberg Charitable Trust  
Therese Steiner  
Anonymous

## LEADERS (\$25,000 - \$49,999)

Marc & Robyn Abrams  
The Bay and Paul Foundations, Inc.  
Paul Blackman  
The Chervenak-Nunnallé Foundation  
Carole Chazin & Dr. James Cone  
D. Rebecca Davies & Jeremy Kramer  
Donald Francis Donovan & Jennifer Lake  
Jacquelyn Grimm  
Matthew & Lisa Harrington  
David Hitz  
Debra Mayer & Joseph Frumkin  
Edwin S. Maynard & Robin Dahlberg  
National Endowment for the Arts  
New York City Department of Cultural Affairs  
New York State Council on the Arts  
Nicola Christine Port  
Gail F. Stone & Matt Fishbein  
Emma Taylor  
Ted Theophilos  
Roslyn Tom & Mark E. Mason  
Anonymous

## ARTISTS' CIRCLE (\$10,000 - \$24,999)

Daniel Abuhoff  
ACE Charitable Foundation (CHUBB)  
Axe-Houghton Foundation  
Kenneth Bartels & Jane Condon  
Justin Blake

Joan and James Blaine  
Bloomberg LP  
Con Edison  
Denise Dickens & James Incognito  
Raymond A. DiPrinzio & Lisa Garson  
Edelman  
The Fan Fox and Leslie R. Samuels  
Foundation Inc.  
Goldman Sachs  
Horace W. Goldsmith Foundation  
Bruce Haims and Judy Jackson  
Lucille Lortel Foundation  
Enid Nemy  
Maeve O'Connor & Jürgen Brojatsch  
Jordan Roth/Jujamcyn Theaters  
Benjamin & Donna Rosen  
Sullivan & Cromwell  
The Sherman Foundation  
Matt Tague  
Thomas Teeple  
The Thompson Family Foundation  
Quad Graphics  
Barbara & David Zalaznick

## VISIONARIES (\$5,000 - \$9,999)

Joan Blaine  
Luigi Caiola & Sean McGill  
Jamie DeRoy  
Janet Dewar  
Gary DiMauro  
The Hitz Foundation  
Steven L. Holley & John W. Hamilton IV  
Bruce Horten & Aaron Lieber  
The Jerome Robbins Foundation  
Hal Luftig  
Riki Kane  
Robert Kosinski & Daniel Macy  
KPMG  
Myra Maultasch & Adam Sherman  
The PECO Foundation



# CSC Donors

---

Laura & Gerald Rosberg  
Evan Sacks  
Robert & Jane Stine  
Teepie Family Charitable Fund at the Greater Alliance Foundation  
Michael Tuch Foundation  
Bruce & Sandra Tully  
The Spence School  
Jim Sulat & Susan Keyes  
Anonymous

## **BENEFACTORS (\$2,500 - \$4,999)**

The Abernathy MacGregor Group  
Barbara Bell Cumming Foundation  
Dorothy Berwin  
Mary Corson and Jonathan Sackler  
Robert S. Fleischer & Susan Raanan  
The Karen & Edward Friedman Family  
Donna & John Hardiman  
Frank & Patricia Lenti  
John R. and Jennifer Monsky  
Daniel A. Napolitano  
Michael & Elyse Newhouse  
Lisa Orberg  
John Orberg  
The Richenthal Foundation  
Finley & Patrick Shaw  
Turner P. Smith and Sabrina Coughlin  
Barry Weissler  
Francis Williams & Keris Salmon  
Susan Wilen

## **PATRONS (\$1,000 - \$2,499)**

Vincent Alfieri and Kerstin Larsen  
Susan Heller Anderson  
John & Elisabeth Avery  
Jeffrey Beck  
Gail and Joseph Berardino  
Bessemer Trust Company  
Louis Bradbury  
John Calcagno & Dr. Amr Abdelaziz  
Capital Group  
Capital Group Companies  
Bruce R. & Susan Cohen  
Michael Contini  
Fisher Dachs Associates Inc.  
Michael Davidson  
William W. Donnell  
David Dotlich  
Susan and James Dubin  
Kurt Dudas  
Fred & Suzan Ehrman  
Diane Englander & Mark Underberg  
Anna May Feige  
Kenneth & Caryl Field  
Stephen Flaherty  
Joanne Flanagan

Ann Marie Foss  
Jennifer Foster  
David Frankel  
Andrew Franz & Bruce Fisher  
Bobby & Vicki Freeman  
Leonard Freifelder & Anne Easterling  
Richard Freundlich  
Gayle Garza  
Egon R. Gerard  
David Greer  
Jamie & Jeffrey Harris  
Kent Harvey  
Craig & Vicki Holleman  
William & Catherine Honan  
The Huxleys  
Nancy Jackman  
John Kander  
Alan Jones  
Kathleen Jones  
Robin Jones  
Sam Katzman  
Sharon Karmazin  
Kathy Keneally & Tom Marshall  
Richard & Luba Kessler  
John Kordel Juliano  
Miodrag Kukrika  
The Dorothy Loudon Foundation  
Carole Ludwig  
Bill & Jane Macan  
Brian & Florence Mahony  
Jonathan Maurer  
Joyce Menschel Family Foundation  
Sheila Nevins  
Elizabeth Newell  
Marla Nissan  
Henna Ong and Peter D. Lawrence  
Marilyn & Peter Oswald  
Amnon Parizat  
Pirret Foundation  
Tania Pouschine  
Peter Quick  
Curtis & Kathy Robb  
Mark Ladner and Julie Ross  
Steve Saide & Steve Brown  
Miriam Schneider  
Barry Schwartz  
Marsha Seeman  
Gretchen Shugart  
Beth & Donald Siskind  
Matthew Patrick Smyth  
Michael Spies  
The Dorothy Strelsin Foundation  
Bill Thurston  
Paul Tramontano  
Maria Vecchiotti  
Freda Wang  
Daniel Wasser

# CSC Donors

Lynne & David Weinberg  
Stephen D. Weinroth  
David Weisbrod & Margaret Simon  
Ellen V. Weissman  
Stuart W. Yothers  
Anthony & Sally Zunino  
David & Monica Zwirner  
Anonymous

*For a listing of generous donations under \$1,000, please visit our website.*

This program is supported, in part, by public funds from the New York City Department of Cultural Affairs in partnership with the City Council, and is made possible by the New York State Council on the Arts with the support of Governor Andrew Cuomo and the New York State Legislature. Assistive listening devices for this theater were generously provided by the Louise and Arde Bulova Fund, Inc. Assistive Listening Program, a project of A.R.T./New York. Special thanks to the Harold and Mimi Steinberg Charitable Trust for supporting Classic Stage Company.

## CSC JOHN DOYLE ARTISTIC DIRECTOR CIRCLE

Marc & Robyn Abrams  
Paul Blackman & Sharon Rowlands  
Justin Blake  
CSC Board Alumni  
Luigi Caiola & Sean McGill  
Carole Chazin, in memoriam  
Becca Davies & Jeremy Kramer  
Jamie DeRoy  
Denise Dickens  
Gary DiMauro  
Ray DiPrinzio & Lisa Garson  
Joan Fox  
Steven L. Holley & John W. Hamilton IV  
Riki Kane Larimer  
John Kander  
Jujamcyn Theaters  
Hal Luftig & Dr. Stewart Adelson  
Barbara & Alan D. Marks  
Debra Mayer & Joseph Frumkin  
Edwin Maynard & Robin Dahlberg  
Maeve O'Connor & Jürgen Brojatsch  
Benjamin & Donna Rosen  
Daryl Roth  
Evan Sacks  
Christine Steiner  
Therese Steiner  
Gail Stone & Matt Fishbein  
Mr. James Sulat & Ms. Susan Keyes  
Emma Taylor  
Roslyn Tom and Mark E. Mason  
The Baruch/Frankel/Routh/Viertel Group  
Barry & Fran Weissler  
Tom Wells & Lee Tannen

*Lists current as of Wednesday, May 23 2018.*



**Council on  
the Arts**



**National  
Endowment  
for the Arts**  
arts.gov

**NYC Cultural  
Affairs**



# Staff for CARMEN JONES

---

Ayo Janeen Jackson, **Assistant Choreographer**  
Orit Jacoby Carroll, **Associate Scenic Designer**  
Eric Reynolds, **Properties Supervisor**  
Amy Price, **Associate Costume Designer**  
Shannon Clarke, **Assistant Lighting Designer**  
Ien DeNio, **Associate Sound Designer**  
Sara Jane Donovan, **Assistant Hair and Wig Designer**  
Rob Reese/  
The Lighting Syndicate, **Production Manager**  
Drew McCollum, **Rigger**

Sarah Dixey, **Wardrobe Supervisor**  
Christianne Bakewell, **Hair and Wig Supervisor**  
Whitaker Gardner, **Light Board Operator**  
Callan Hughes, **Audio Engineer**  
Gemma Josephine, **Audio Assistant**  
Kelly Martin, **Light Board Programmer**  
Tristan Nash, **Videographer**  
Marcia Pendelton/  
Walk Tall Girl Productions, **Audience Development**  
AKA NYC, **Marketing Services**

## Casting:

### Telsey + Company:

**Bernard Telsey CSA, William Cantler CSA, David Vaccari CSA, Bethany Knox CSA, Craig Burns CSA, Tiffany Little Canfield CSA, Rachel Hoffman CSA, Patrick Goodwin CSA, Karyn Casl CSA, Kristina Bramhall, Adam Caldwell CSA, Josh Einsohn CSA, Rachel Nadler, Rachel Minow, Rikki Gimelstob, Rachel Dill CSA, Ryan Bernard Tymensky CSA, Rebecca Scholl CSA, Scott Galina, Madison Sylvester, Lauren Harris, Laura Wade, Ally Kiley, Rose Bochner, Kristian Charbonier, Julia Torres, Destiny Lilly, Leigh Ann Smith, Lily Schneider, Meghan Ryan**

## Credits:

Scenic elements built by Brian Coleman Design, iWeiss Theatrical Solutions. Lighting equipment provided by Hayden. Sound equipment provided by Masque Sound and Recording Corp. Technical Supervision and Production Electrician services provided by The Lighting Syndicate. Production audio services provided by Five Ohm. Props by Trappings & Properties, BrenBri Props. Props constructed by J-2-2 Productions. Special Thanks to: Carroll Music, John Kristiansen Theatrical Tailors, Nicole Jablonski, Christopher Squires, Mike Pilipski, Black Paint Productions, Signature Theatre, The Public Theater.

This production was rehearsed at NEW 42ND STREET® STUDIOS.

## CSC Administrative Staff

---

John Doyle, **Artistic Director**

Archer Brinkley, **Digital Marketing Assistant**  
Gina Cimmelli, **Director of Audience Services**  
Toni Marie Davis, **Chief Operating Officer/GM**  
Brendan McNamara, **Assistant General Manager**  
Michael Mullen, **Teaching Artist in Residence**  
Erika Mallin, **Arts Consultant**

### Box Office Associates

Emily Kuntz, Medha Dutt, Emily Murphy,  
Clarisse Van Kote

### House Managers

Cassandra Nwokah, Andrew Oakes, Carrie Pieper,  
Patrick Truhler

### Interns

Eliza Berman, Brandon Hilfer, Claire Resele-Tiden

## Special Services

---

David L. Arsenault, **50th Season Theater Design Associate**  
Darren Ley, Galbraith & Co., **Accounting Services**  
Schall & Ashenfab, CPAs, LLC, **Auditor**  
Joan Marcus, **Company Photographer**  
Robert Goldberg, Yorke Construction, **Construction**  
Advance NYC, **Development Consultant**  
Design Army, **Graphic and Web Design**  
C&S International Insurance Brokers, Inc., **Insurance**  
Turner P. Smith, **Legal Counsel**  
Marc Thibodeau, The Publicity Office, **Press Representative**  
OvationTix, **Ticket Services**  
Openbox9, **Website Development**



THE ACTORS AND STAGE MANAGERS EMPLOYED IN THIS PRODUCTION ARE MEMBERS OF ACTORS' EQUITY ASSOCIATION, THE UNION OF PROFESSIONAL ACTORS AND STAGE MANAGERS IN THE UNITED STATES



United Scenic Artists - Local USA 829  
of the I.A.T.S.E. represents  
the Designers & Scenic Artists  
for the American Theatre



The Director and Choreographer are members of the STAGE DIRECTORS AND CHOREOGRAPHERS SOCIETY, a national theatrical labor union.



The musicians employed in this production are members of the Associated Musicians of Greater New York, Local 802 of the American Federation of Musicians.

# FOLLOW US



@CLASSICSTAGE



@CLASSICSTAGECOMPANY



136 E 13TH ST NEW YORK NY 10003

CLASSICSTAGE.ORG

212 677 4210